

# DIRTY

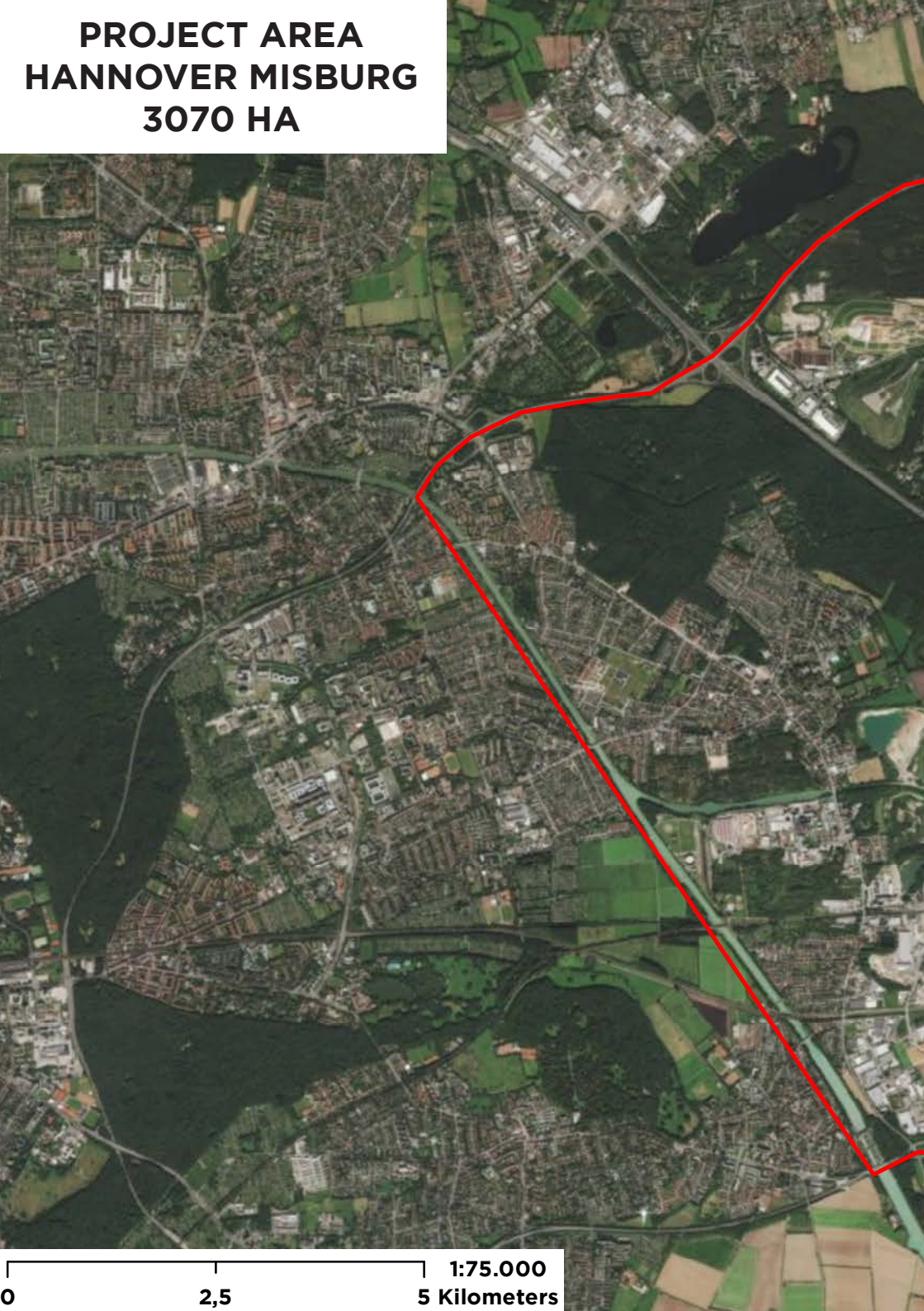
# ECOLOGIES



## DESIGNING ANTHROPOCENIC HUMANS FOR THE EARTHBOUNDS

INTRODUCTION BOOKLET EMILA SUMMERSCHOOL  
23 - 30TH AUGUST 2019 IN HANNOVER, GERMANY

**PROJECT AREA  
HANNOVER MISBURG  
3070 HA**







↑ Anthropogenic influences forming the landscapes in the Wild East of Hanover

↓ Many artefacts can be discovered within Misburg



## Duration & Location

Arrival:	22th August 2019 from 2.00PM - Hotel is reserved and Hostel booked for the night from 22-23th.
<b>Obligation Time:</b>	<b>23th August from 9.00AM - 30th August 2.00PM</b>
Departure:	30th from 2.00PM on, but you are invited to stay with us until your train or flight will depart.
<b>Location:</b>	Gottfried Wilhelm Leibniz Universität Hannover Institut für Freiraumentwicklung <b>Herrenhäuser Str. 2a, 30419 Hannover</b>

## Topic

### **Dirty Ecologies** - Designing anthropocenic humus for the Earthbounds

Dear EMiLA partners and friends,

We are happy to announce that the next EMiLA Summer School will take place in Hannover, Germany from August 23rd to August 30th 2019. We will work on an exciting project area in Hannover-Misburg in an environment of underestimated potential. Even the local inhabitants are unaware of the manifold beauty and productivity of these landscapes at the very eastern edge of Hannover.

Misburg has a very eventful history on account of its geological and historical condition. As a man-made-land, it is characterized by a criss-crossing of canals, motorways, high-speed railway lines, quarries and (post-)industrial zones, creating sublime landscapes, a source of abundant biodiversity and recreation for all ‚Earthbounds‘ (cf. Bruno Latour “Down to Earth. Politics in the New Climatic Regime”, Cambridge 2018).

The 8 x 4 km perimeter of Misburg will serve as a laboratory for new kinds of terrestrial design strategies in our EMiLA Summer School. We are going to explore the urban jungle, industrial estates, agricultural land and nature conservation areas up and down the pit slopes and in the water. By viewing the limestone pits, oil refinery and landfill as an ‚anthropocenic humus‘, we ask ourselves: How can we design an integrated and aesthetic meshwork to reclaim the site for all ‚Earthbounds‘?

## **EMiLA Partners**

LUH / Leibniz Universität Hannover / Institute for Open Space Planning and Design  
ENSP Versailles / Ecole Nationale Supérieure de Paysage Versailles/Marseille  
ESALA / The University of Edinburgh / Edinburgh College of Art  
AUA / AAA/ Amsterdam University of the Arts / Amsterdam Academy of Arch.  
UPC / Universitat politècnica de Catalunya / MBLandArch (ETSAB - ESAB)

## **Other invited universities**

Ljubljana University / Ana Kucan  
Peking University / Li Dihua  
MIT Melbourne / Charles Anderson  
Aalto University Helsinki / Marianne Skjulhaug (tbc)

↓ The project area is characterised by moving waters and topographies



## Activities

At the very beginning of the Summerschool we are starting to get to know our project site by moving through the urban landscape by bike and by feet during the weekend. Different (guided) tours like walking on the landfill or exploring nature conversation areas giving us an insight in the complexity of our design area. In addition we have invited some external experts from research, administration and society to give us some inputs about the „wild east of Hannover“.

From Monday to Friday our work and design centre is located in the Faculty of Architecture and Landscape, Institute for Open Space Planning and Design. We have an entire pavilion with an adjacent sculpture garden at our disposal to work and promote our collective creativity. Therefore, a mixture of different analysis and design techniques and presentation methods will diversify and accelerate our co-working.

↓ Different substrates and materials are forming the anthropocentric humus



# Accomodation

## Students

You do NOT have to book the Hostel by yourself - we do it for you!

### **Dormitories, breakfast included - 30,00 Euro per night**

Jugendherberge Hannover International (Tel. 0049 511 12359080)

Ferdinand-Wilhelm-Fricke-Weg 1, 30169 Hannover

<https://www.jugendherberge.de/en/youth-hostels/hannover-301/portrait/>

## Teachers

We have reserved rooms for you. BOOKING have to be done by yourselves!

### **Singlerooms, breakfast included - 87,00 Euro per night**

Werkhof Hannover-Nordstadt (Tel. 0049 511 35 35 65 00)

Schaufelder Str. 11, 30167 Hannover

<https://werkhof-hannover.de/hotel-schlafgut>

↓ Wilderness can be found throughout the whole design parameter





# Confirmation

We need your **reply until 15th of June**. This response is understood as a binding commitment.

**Deadline of money-transfer on following bank account is June 30th:**

Bank: Norddeutsche Landesbank Hannover

Recipient: Leibniz Universität Hannover

IBAN: DE26 2505 0000 0101 4270 94

BIC: NOLADE2H

Purpose: 14708000 + Your Name

Please send a copy of your student card (enrollment confirmation) to **summerschool@freiraum.uni-hannover.de**

## Costs

EMiLA students: 250 Euro (Hostel included)

Non EMiLA students: 350 Euro (Hostel included)

Teachers: 30 Euro per day PLUS Hotel

The cost includes public transport, welcome and farewell BBQ, guided tours, materials, etc. Except for breakfast and BBQs everybody has to pay for his own food.

